

ESAmix-Rac-375

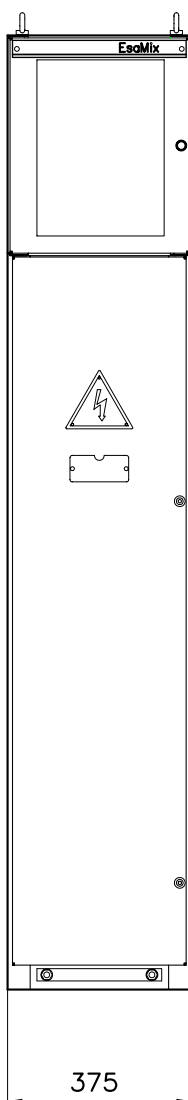
UNITA' ARRIVO CAVI

Incoming cable unit

TIPO SCOMPARTO
COMPARTMENT TYPE

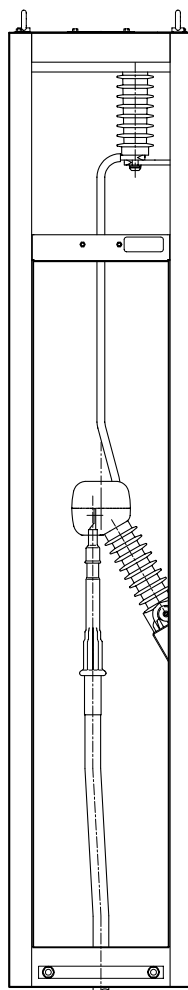
FRONTE PANNELLO

PANEL FRONT



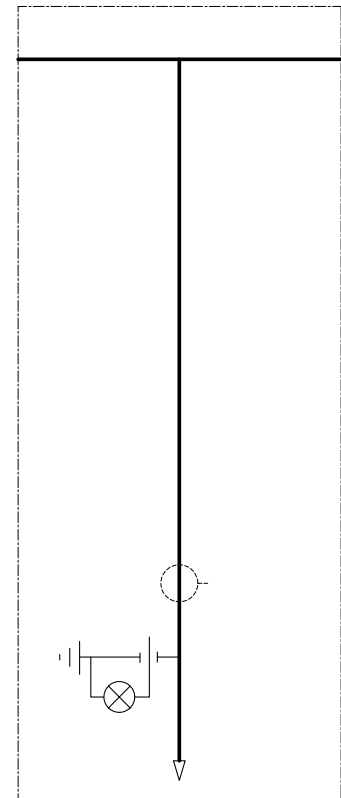
SEZIONE INTERNA

INTERNAL CROSS SECTION



SCHEMA UNIFILARE

SINGLE WIRED DIAGRAM



Rev. 0 del 15/12/2005

PESO KG 120
WEIGH KG

EsaMIX 24 kV

Quadro protetto di MT con sezionamento in gas SF6
Metal-enclosed switchboard with SF6 load break switch

zamberlan
ELETTROMECCANICA